

Britain's leading magazine for architectural products, technology and trends

ARCHITECTURE

MARCH 2020

M A G A Z I N E

SAY CHEESE

PHOTOGRAPHER
EDMUND DABNEY
OFFERS HIS INSIGHT
INTO LIFE BEHIND
THE CAMERA

EMRE AROLAT

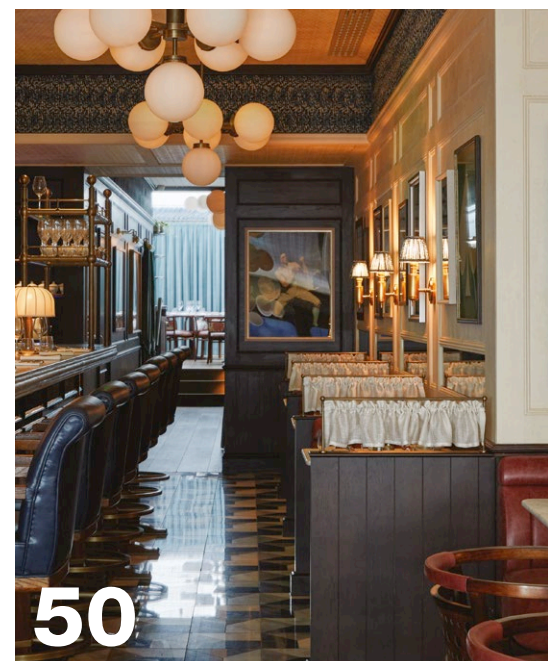
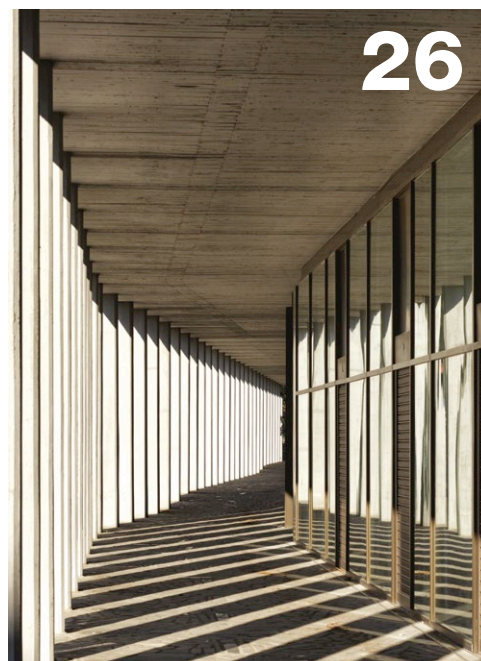
THE RENOWNED TURKISH ARCHITECT TALKS
IN-DEPTH ABOUT **RESILIENCE ARCHITECTURE**
AND OUR NEED FOR IT IN THESE TIMES

Exhibitionists

THE QUESTION TIME PANELISTS CONSIDER THE BEAUTY AND
IMPACT OF **EXHIBITION AND INSTALLATION ARCHITECTURE**

Quooker

THE TAP THAT DOES IT ALL
100°C BOILING, CHILLED
AND SPARKLING



35 SCHÖCK SPOTLIGHT

37 RAVAGO SPOTLIGHT

38 THE BARN CASE STUDY

Orosz Design was tasked to completely refurbish the main bathroom located on the first floor of this house.

40 VASCO SPOTLIGHT

41 ASK THE EXPERT

Sound Space Vision share their 'sound' advice on acoustics in performance spaces

42 COMMERCIAL DESIGN

43 LEGAL UPDATE

45 MY INSPIRATION

Leni Popovici shares her inspiration behind her career as an architect

46 MERCHANTS HALL CASE STUDY

Ben Adams Architects has transformed a former post office sorting office in Islington to deliver stunning new offices.

49 CIBSE AWARDS 2020

50 MONCKS OF DOVER STREET CASE STUDY

Fettle wanted to create a warm and inviting restaurant and welcoming dining experience

53 CONTRACT FURNITURE BY DESIGN: Q&A

54 INDUSTRY: PHOTOGRAPHY IN ARCHITECTURE

Edmund Dabney is the pro with the lens

58 SHORTLIST: SURFACES + MATERIALS

59 AQUARIAN CLADDING SPOTLIGHT

62 LAST WORD

James Potter on climate change



THE BARN

by **Orosz Design**

Dating from 1794, "The Barn" is truly an outstanding property situated in the heart of the picturesque village of East Bridgford, Nottinghamshire and stands in its own spacious delightful gardens that overlook the village cricket ground.

Originally the Tithe Barn, belonging to the 15th Century Burneham House, the property has undergone many alterations and enlargements over the years; but all have blended beautifully allowing the charming and individual character of this period house to be retained.

Like many Georgian homes the property has the benefit of an attractive exterior but some of the interiors didn't quite meet with the requirements of modern living.

Orosz Design was tasked to completely refurbish the main bathroom located on the first floor of the house. This entailed reconfiguring the layout of the room to create a better sense of space whilst introducing the benefits of a contemporary living style using earth tones and rich textures, resulting in an elegant serene escape.

Beata Orosz, Architectural Designer, Orosz Design explained the scheme: "We wanted to create a sustainable, timeless design that suits modern living and to bring a touch of the unexpected. It was important to consider the existing surroundings when it comes to the design of the interior of such a property but also to create a space that is enjoyable and reaches the highest of modern standards." Reinforcing the floor structure was an

unavoidable part of this project as the stone bath alone weighed approximately 200kg. Waterproofing was also a major challenge but installing the Schlüter-System not only insured a quality, long lasting solution, but also aided the project management process through the support of their technical sales team.

For additional comfort, Schlüter-System's electric heating system was used for the heated walls and floor, which are operated via a touchscreen display or remotely using a smartphone. This system is designed to raise the temperature of the surface rather than the room, so is an enhancement as opposed to a replacement for a primary heat source. Oversized Italian made ceramic tiles of 90 x 90cm were used both for the floor and part of

SUPPLIER TEAM

Waterproofing, wall and floor heating, strip LED lights

Schlüter-Systems Ltd

Tiles: Studio Ceramics

Taps, basins, bath and shower tray

Lusso Stone

Wall hang toilet, flash plate

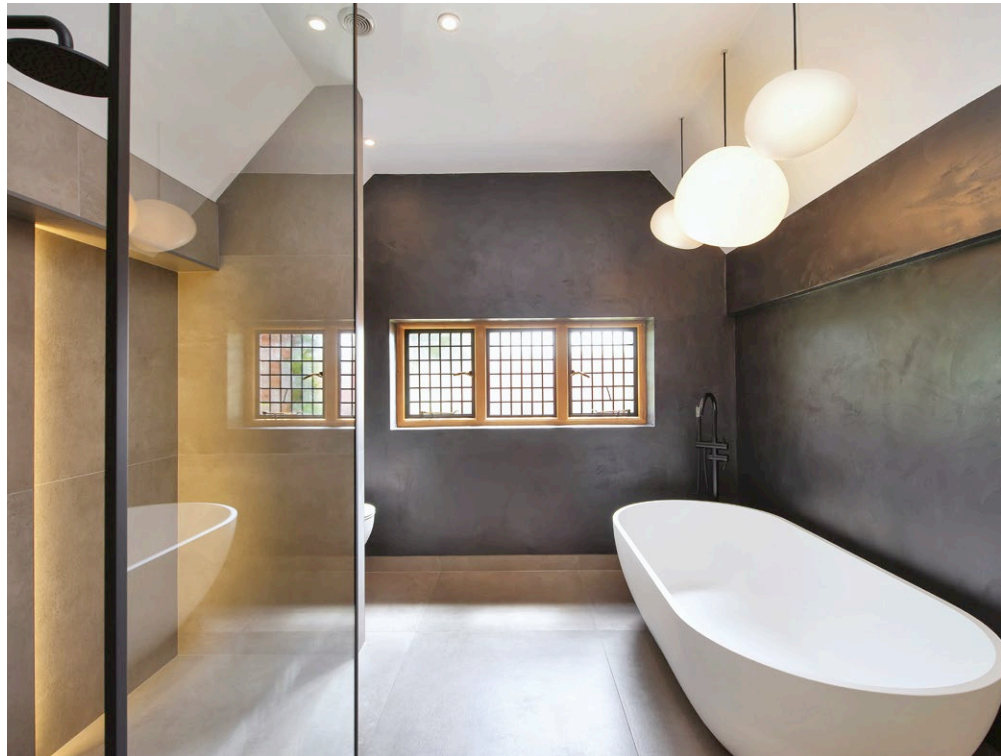
Original Bathrooms, London

Wall finishing: Design Concrete

Pendant lights: Foscarini

Shower screen and heated mirror

Go Glass



the wall surface. It was a challenge to choose the right material in terms of colour and texture in order to create a perfect balance between all the elements of the room. Choosing the right lighting was also an important aspect of the project as it creates the mood and ambiance of the space. Warm coloured waterproof LED strip lights were installed within the shower area and underneath the bespoke vanity unit. The custom-made mirror was also designed to produce indirect light to illuminate the texture of the wall and to create an atmosphere when the main lights are switched off.

Dimmable pendant lights were installed above the bath as a unique design feature to enhance the space. The challenging task was

to source a product that was above IP44 rating and yet still fitted into the scheme. Luckily there was one style by Foscarini - Gregg with IP65 rating - that ticked all the boxes and met with safety requirements.

To prevent the effect of a harsh, disconnected contemporary design, seemingly period features, were introduced by the application of a special material.

Design Concrete was applied to the walls to merge the old and new in a gentle, subtle way. This produces an uneven texture - to give a timeless and elegant appearance - whilst still being mold resistant and waterproof. The product does though require a highly skilled plasterer as each of the two applications are only 1mm in thickness!

The vanity unit was specially designed,

using the highest quality materials and manufactured by a local craftsmen.

The rich contrast of white stone basins and bath with sleek black taps and shower tray, all from Lusso Stone, were great a combination. These dark features, however, required a water softener system to be fitted to the property's main water supply this being to prevent a more visually obvious limescale build-up on the black elements. Although, this also had the additional benefit of improving the home's water quality. The framed shower screen's important role was not just to provide a shield from the splashing water, but also to complete and to complement the overall design.

www.oroszdesign.com

All photography by Jon Holmes